

DRAWING NUMBER
25-201

REPLAT OF BLOCKS 8-9 & 10 OF

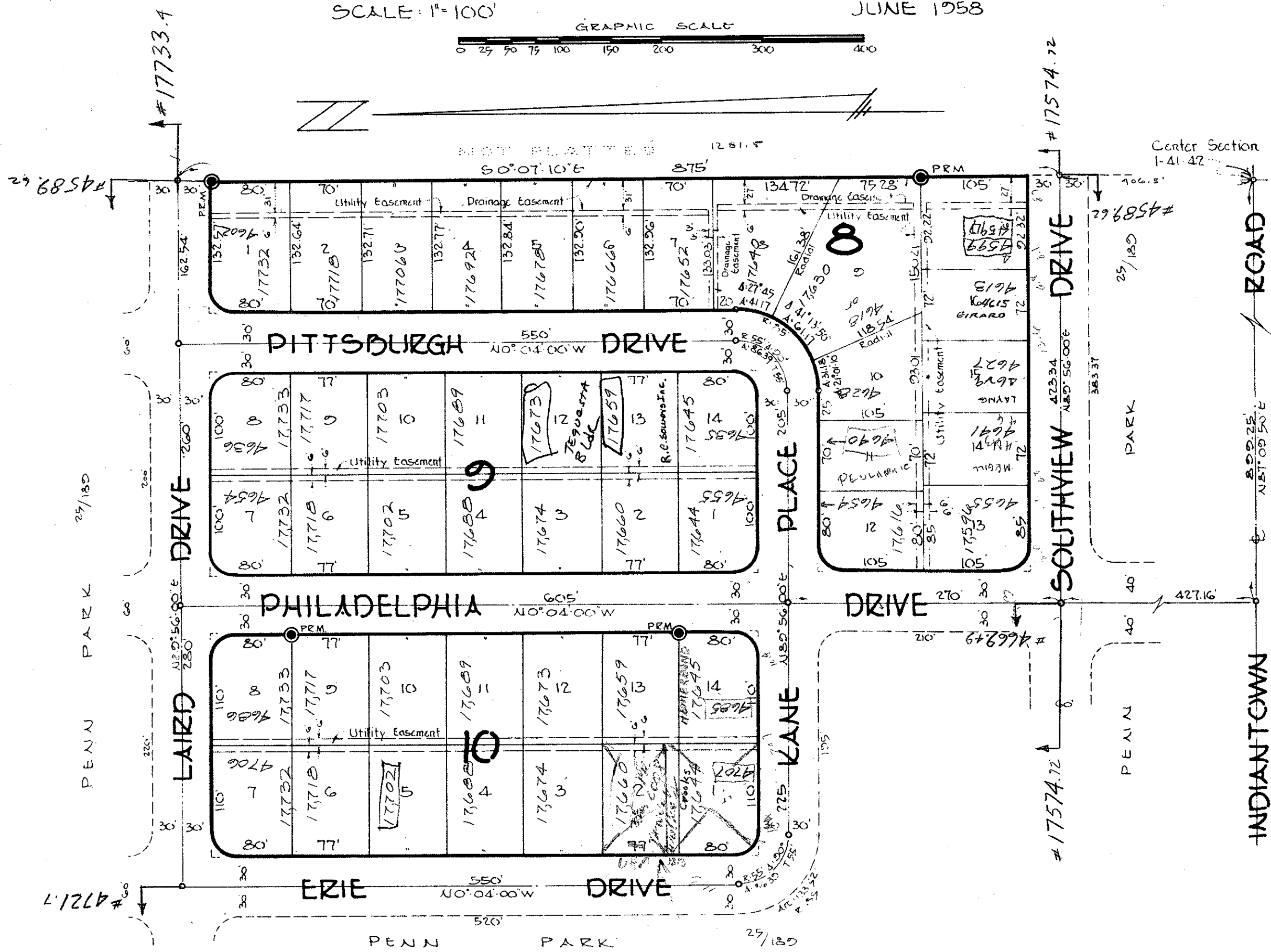
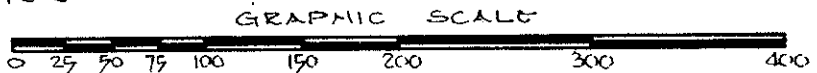
PENN PARK

RECORDED IN PLAT BOOK 25 PAGE 189

LYING IN THE EAST 1/2 OF THE NW 1/4 OF SEC. 1 - TWP. 41 S - RGE. 42 E
PALM BEACH COUNTY FLORIDA

THOMAS L. MACKEY
- REGISTERED LAND SURVEYOR -
JUPITER FLORIDA

SCALE: 1"=100' JUNE 1958



201

STATE OF FLORIDA
COUNTY OF PALM BEACH
This is to certify that the above described plat was filed for record on the 16th day of July 1958 in Plat Book 25 page 201.
Bertha M. Gibson

STATE OF FLORIDA
COUNTY OF PALM BEACH

KNOW ALL MEN BY THESE PRESENTS:-

That PENN LAND CO. INC., a Florida Corporation, the owners of the tracts of land lying and being in Section 1 - Township 41 South, Range 42 East, Palm Beach County, Florida, shown hereon as 'REPLAT OF BLOCKS 8-9 and 10 OF PENN PARK' and more particularly described as follows, to wit: Blocks 8, 9 and 10 of 'PENN PARK' subdivision as the same appears platted and recorded in Plat Book 25 page 189 of the Public Records of Palm Beach County, Florida, has caused the same to be surveyed and replatted as shown hereon, and does hereby dedicate to the perpetual use of the public as public highways the Streets shown hereon and the use of the easements for the construction and maintenance of public utilities and drainage.

IN WITNESS WHEREOF - the said corporation has caused these presents to be signed by its Vice-President and attested by its Treasurer and its Corporate Seal to be affixed hereto, by and with the authority of its Board of Directors this 23d day of June AD 1958.

Attest Vaughn V. Bowman Jr. Treasurer. By Jack R. Frost Vice President.

STATE OF FLORIDA
COUNTY OF PALM BEACH

I HEREBY CERTIFY - That on this day personally appeared before me, an officer duly authorized to administer oaths and take acknowledgements, JACK R. FROST and VAUGHN V. BOWMAN, Vice-President and Treasurer, respectively, of PENN LAND CO. INC., a Florida Corporation, to me well known and known to me to be the individuals described in, and who executed the foregoing dedication, and they acknowledged before me that they executed the same as such officers of said Corporation by and with the authority of the Board of Directors of said corporation for the uses and purposes therein expressed.

WITNESS my hand and official Seal at Jupiter, County of Palm Beach, and State of Florida, this 23d day of June AD 1958.

My Commission expires July 20, 1960

Richard Parker
Notary Public State of Florida at Large.

APPROVED this 14 day of July AD 1958 by the Board of County Commissioners Palm Beach County, Florida.

By Alfred Maddux County Engineer.

By Ray E. Michael Jr. Chairman

STATE OF FLORIDA
COUNTY OF PALM BEACH

I HEREBY CERTIFY That the plat shown hereon is a true and correct representation of a survey made under my direction of the above described property, and that said survey is accurate to the best of my knowledge and belief, and that Permanent Reference Monuments (PRM) have been placed as required by law.

Subscribed and sworn to before me this 23d day of June AD 1958.

Mary A. Benton
Notary Public State of Florida at Large
My Commission expires 7-5-58

Thomas L. Mackey
Thomas L. Mackey
Registered Land Surveyor No. 260
State of Florida.

Surveyors Notes:-

- All radii are 25 feet unless otherwise indicated. Dimensions on corner lots are to the intersection of block lines extended.
- All utility easements are 60 feet wide.
- Dimensions along curves are the arcs thereof.
- There shall be no buildings on utility easements.
- There shall be no building or any kind of construction, or the planting of trees or shrubs, on drainage easements.
- Building set-back lines shall be as required by Palm Beach County Zoning regulations.

1/2 Sec. 1 - Twp. 41 S - Rge. 42 E
PENN PARK - DEWITT DRIVE

1000-383

25
201

1/41/42

DRAWING NUMBER
PLAN HOLD CORPORATION - PALM BEACH, CALIFORNIA
REGISTERED BY NUMBER 2348
PERSON USE BY PRINT OR WITH LINE

DRAWING NUMBER
PLAN HOLD CORPORATION - PALM BEACH, CALIFORNIA
REGISTERED BY NUMBER 2348
PERSON USE BY PRINT OR WITH LINE

DRAWING NUMBER
PLAN HOLD CORPORATION - PALM BEACH, CALIFORNIA
REGISTERED BY NUMBER 2348
PERSON USE BY PRINT OR WITH LINE